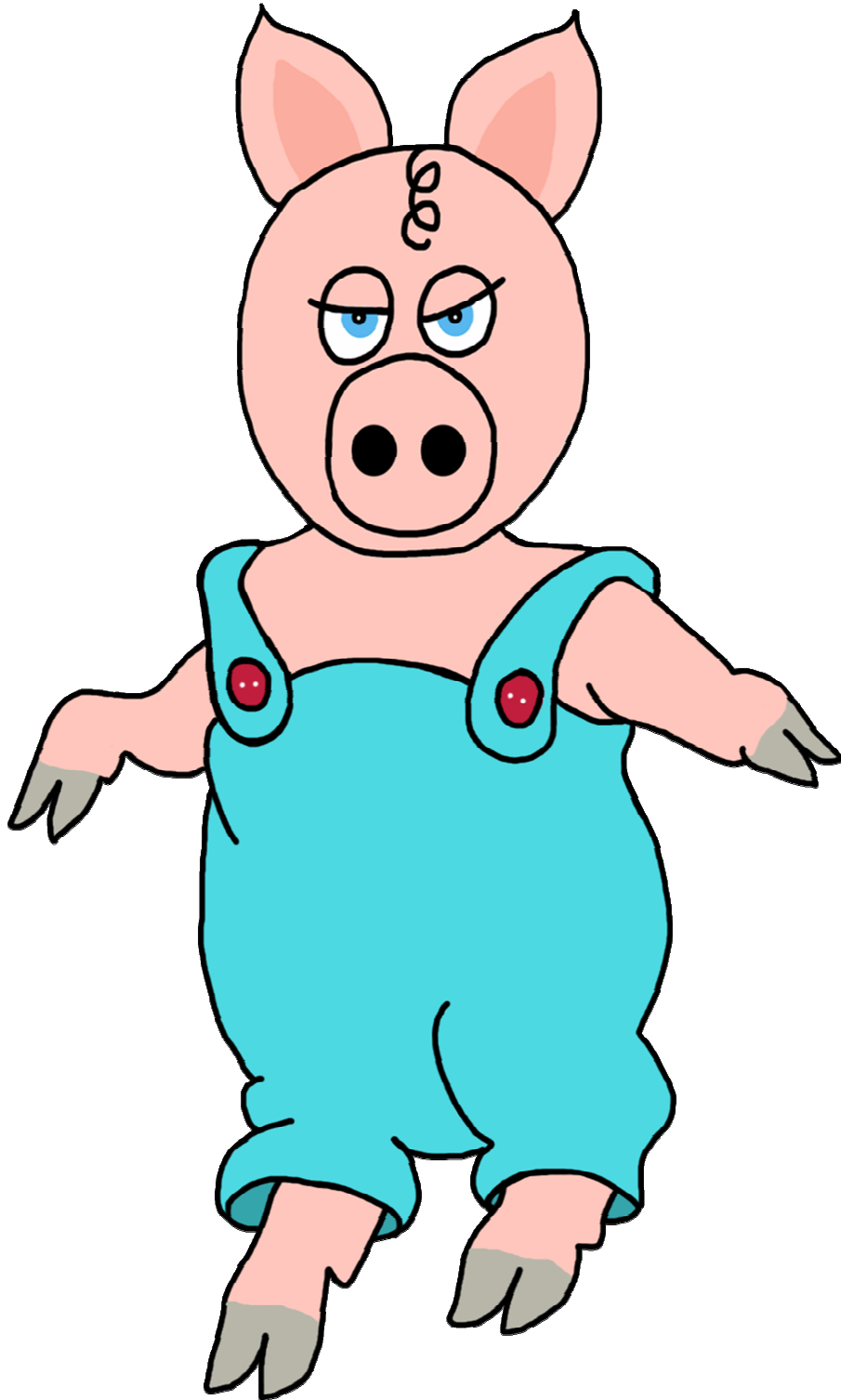


# Make a Pookie Pig Puppet

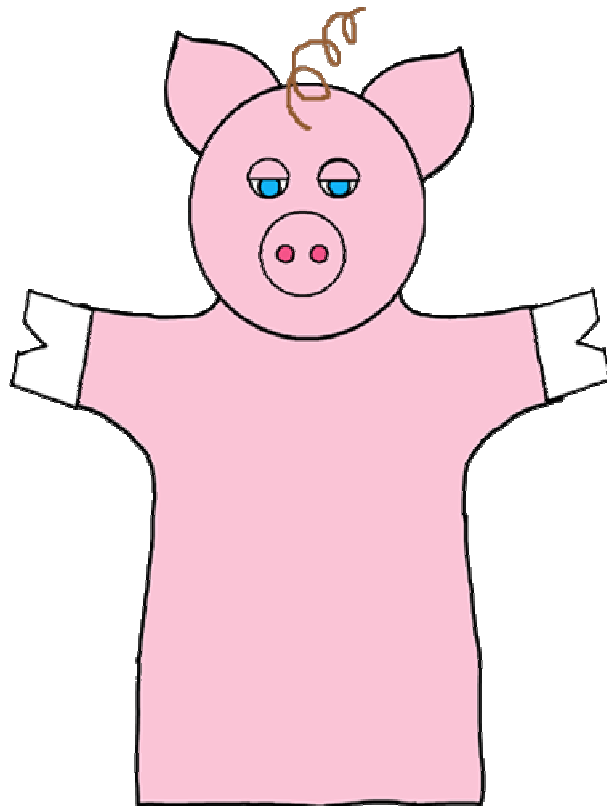


# PATTERN FOR A POOKIE PIG PUPPET

The puppet is cut from 12" X 12" squares of colored felt. You will need the following:

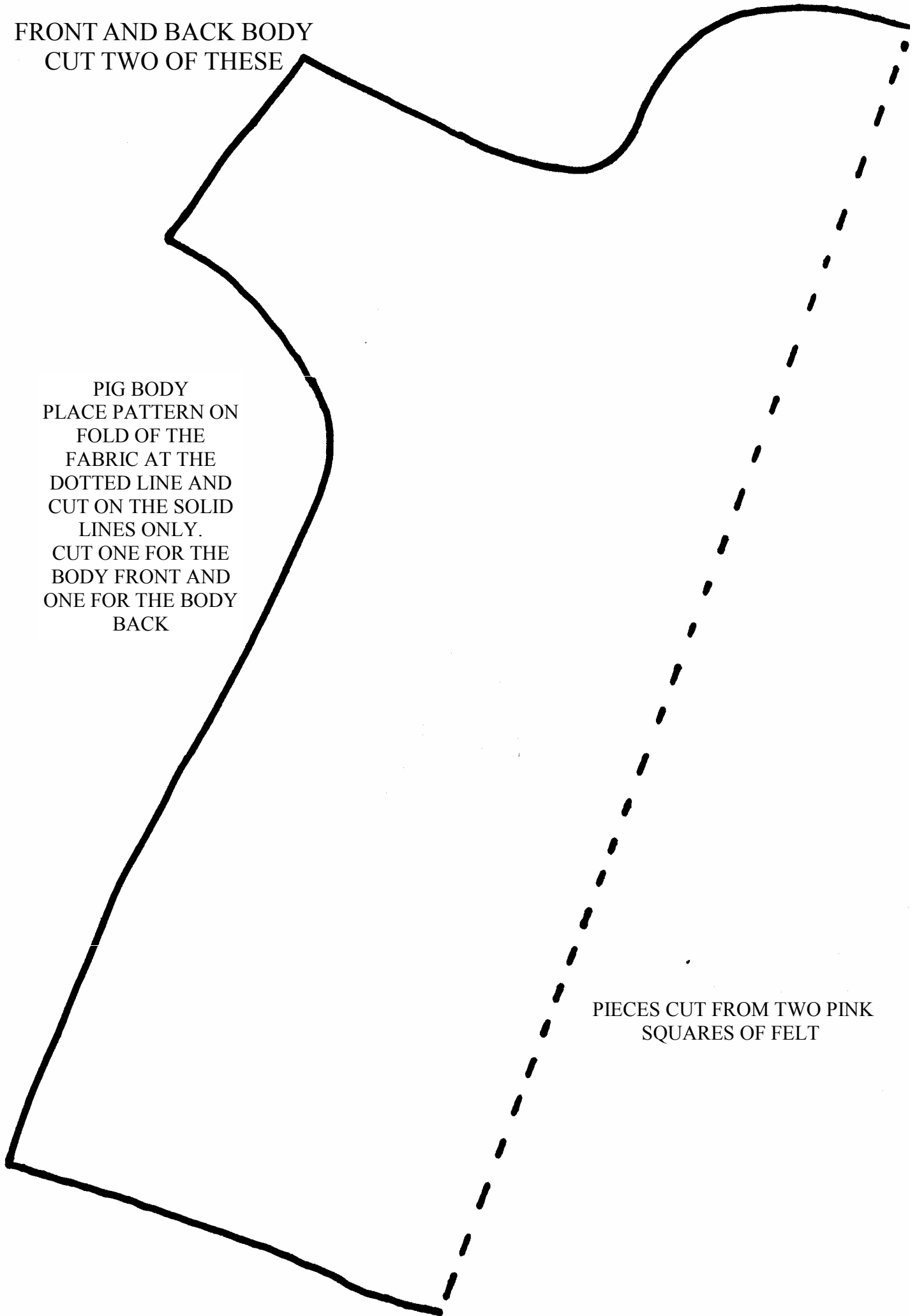
- 3 squares of pink felt
- A small amount of white
- A small amount of blue
- A pipe cleaner

The puppet body pattern should be placed on a fold of the fabric at the dotted line. You will need two body parts—one for the front of the puppet and the other for the back of the puppet. **IMPORTANT: Do not glue or sew the front to the back until the other pieces are in place.** Cut out the other pieces. Sew or glue the pieces to the front head piece before putting the puppet together. Sew or glue the hooves to the front and back before assembly. The puppet can be sewn or glued together around the edges leaving the bottom open for your hand.

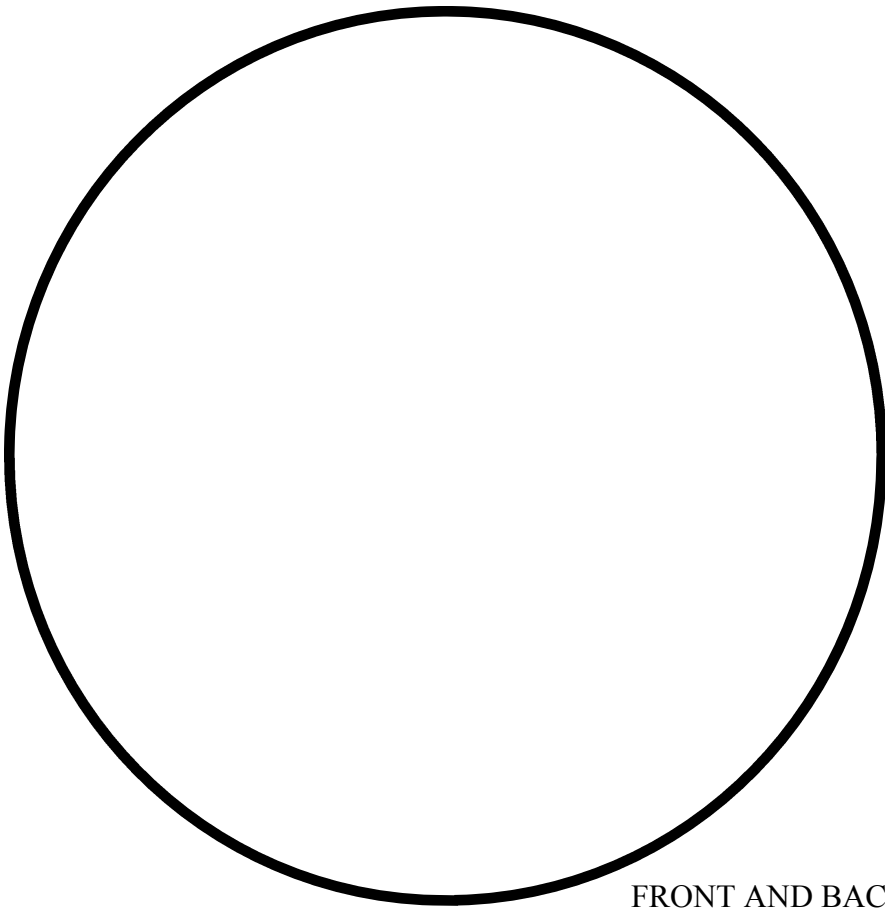


FRONT AND BACK BODY  
CUT TWO OF THESE

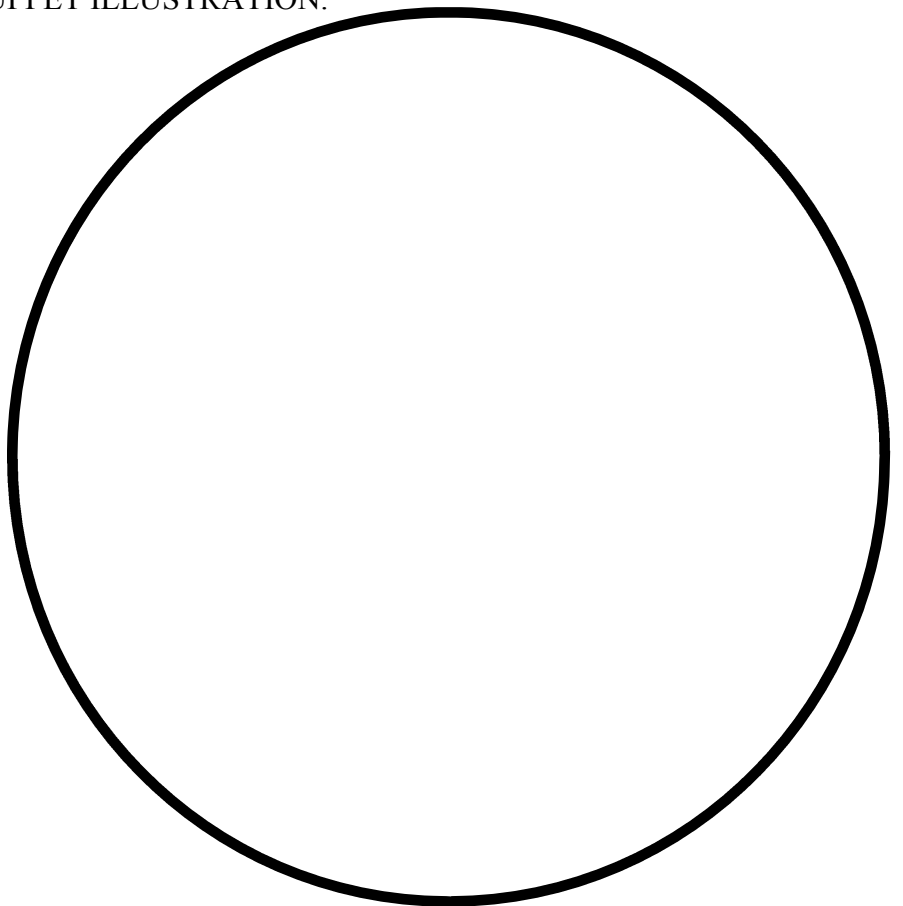
PIG BODY  
PLACE PATTERN ON  
FOLD OF THE  
FABRIC AT THE  
DOTTED LINE AND  
CUT ON THE SOLID  
LINES ONLY.  
CUT ONE FOR THE  
BODY FRONT AND  
ONE FOR THE BODY  
BACK



PIECES CUT FROM TWO PINK  
SQUARES OF FELT



FRONT AND BACK OF PIG HEAD ATTACH FACIAL  
FEATURES AND CURLY PIPE CLEANER FOR HAIR.  
SEE PUPPET ILLUSTRATION.

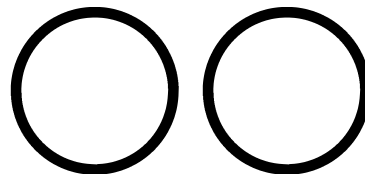




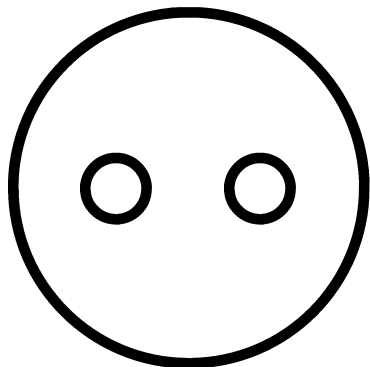
PIG PUPILS  
ATTACH HALFWAY  
UNDER DROOPY EYELID  
BEFORE ASSEMBLY



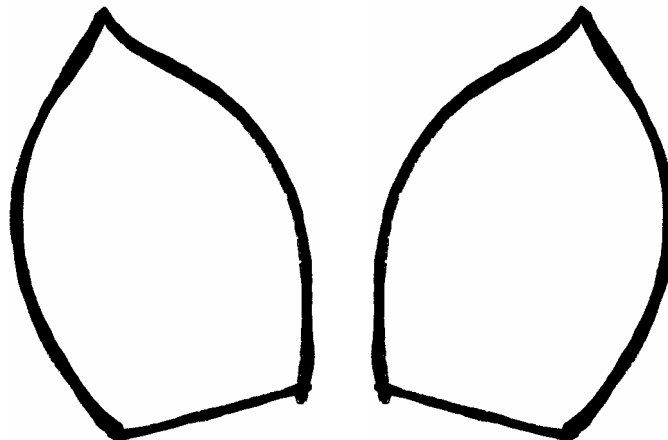
PIG DROOPY EYELIDS  
ATTACH TO EYES  
BEFORE ASSEMBLY



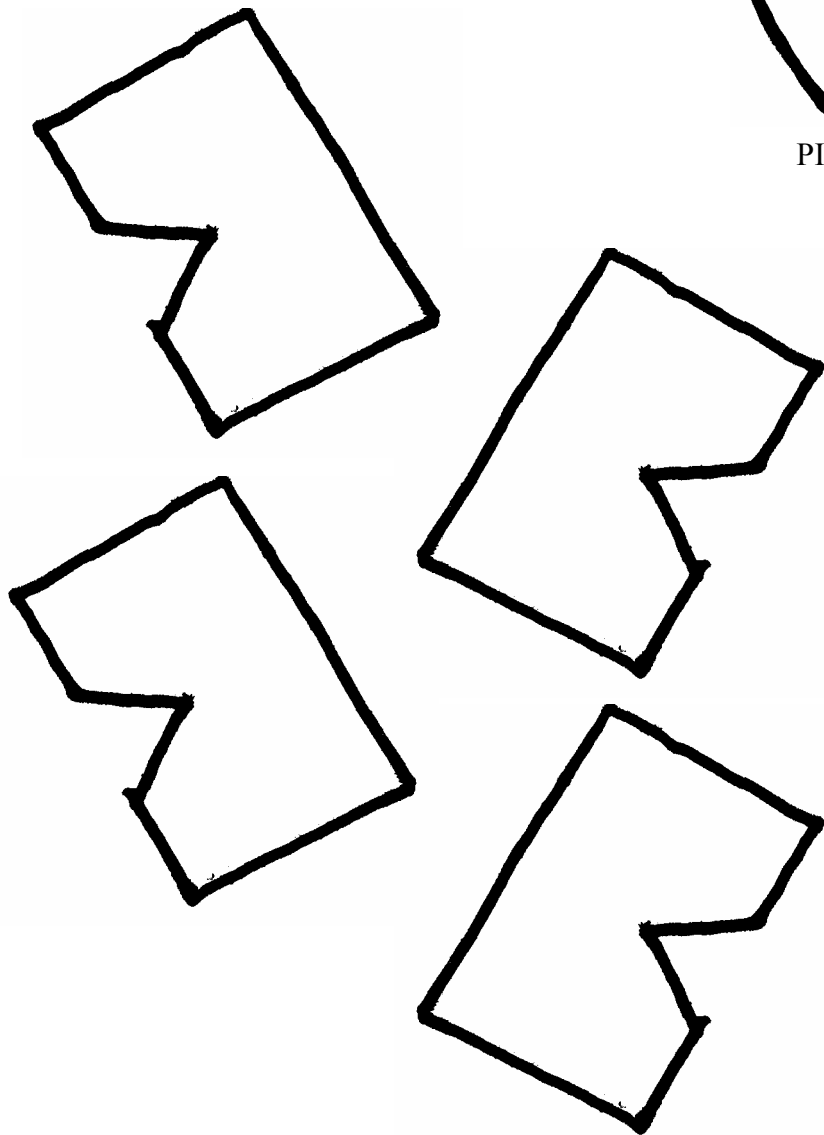
PIG EYES ATTACH  
PUPILS AND DROOPY  
EYELIDS BEFORE  
ASSEMBLY



PIG SNOUT  
PUNCH NOS-  
TRILS WITH  
HOLE PUNCH  
BEFORE  
ASSEMBLY



PIG EARS ATTACH TO FRONT  
HEAD  
PIECE BEFORE ASSEMBLY.



PIG HOOVES—ATTACH ONE TO LEFT AND RIGHT ON  
BOTH FRONT AND BACK OF BODY PIECES BEFORE  
ASSEMBLY

