

# PATTERN FOR A MADISON MOUSE PUPPET

The puppet is cut from 12" X 12" squares of colored felt. You will need the following:

- 3 squares of gray felt
- A small amount of pink
- A small amount of white
- A small amount of black

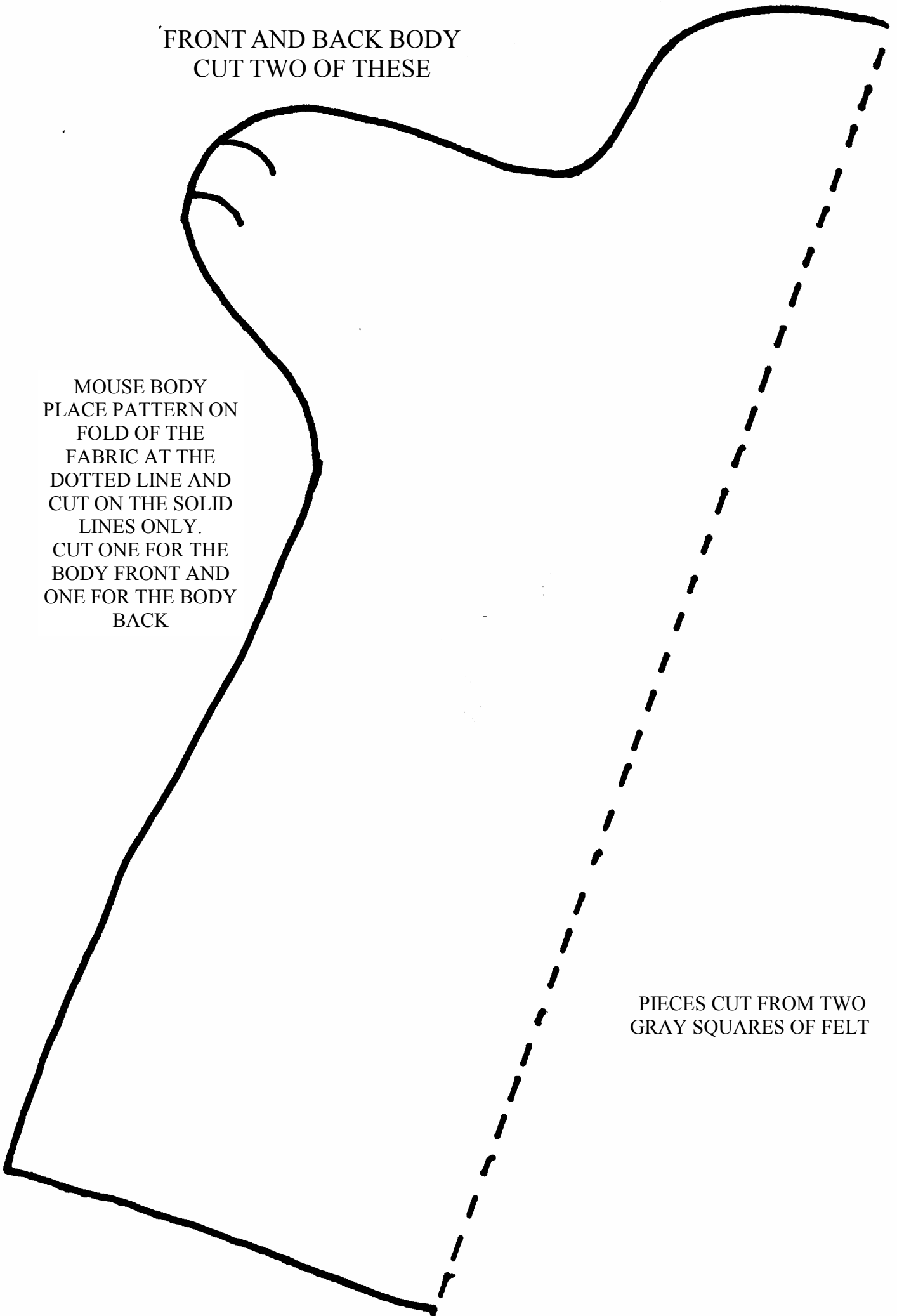
The puppet body pattern should be placed on a fold of the fabric at the dotted line. You will need two body parts—one for the front of the puppet and the other for the back of the puppet. **IMPORTANT: Do not glue or sew the front to the back until the other pieces are in place.** Cut out the other pieces. Sew or glue the pieces to the front head piece before putting the puppet together. Draw features on with a magic marker. (Alternative—embroider the features on.) This should be done prior to putting the puppet together. The puppet can then be sewn or glued together around the edges leaving the bottom open for your hand.

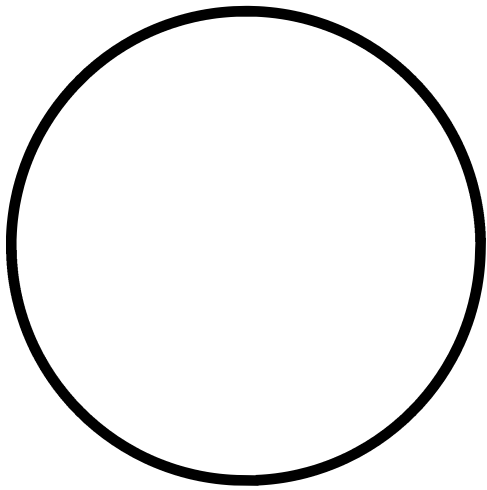
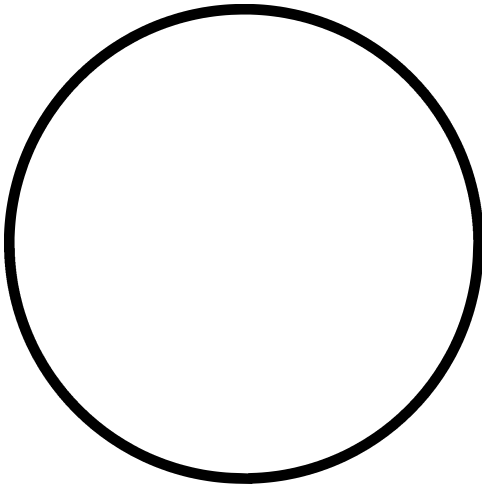


FRONT AND BACK BODY  
CUT TWO OF THESE

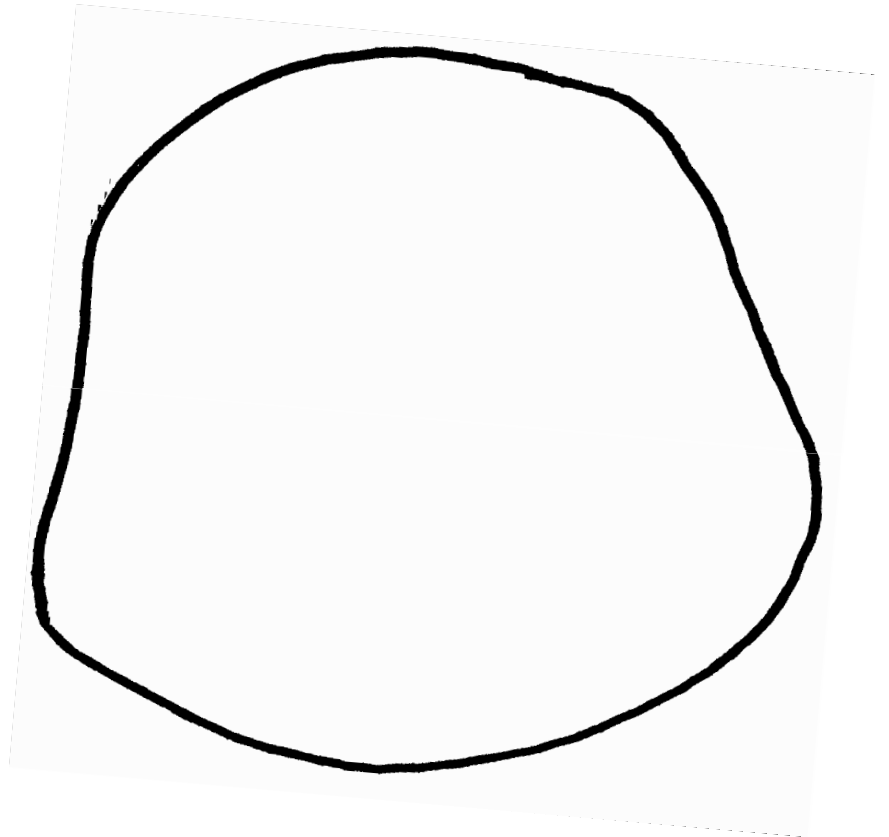
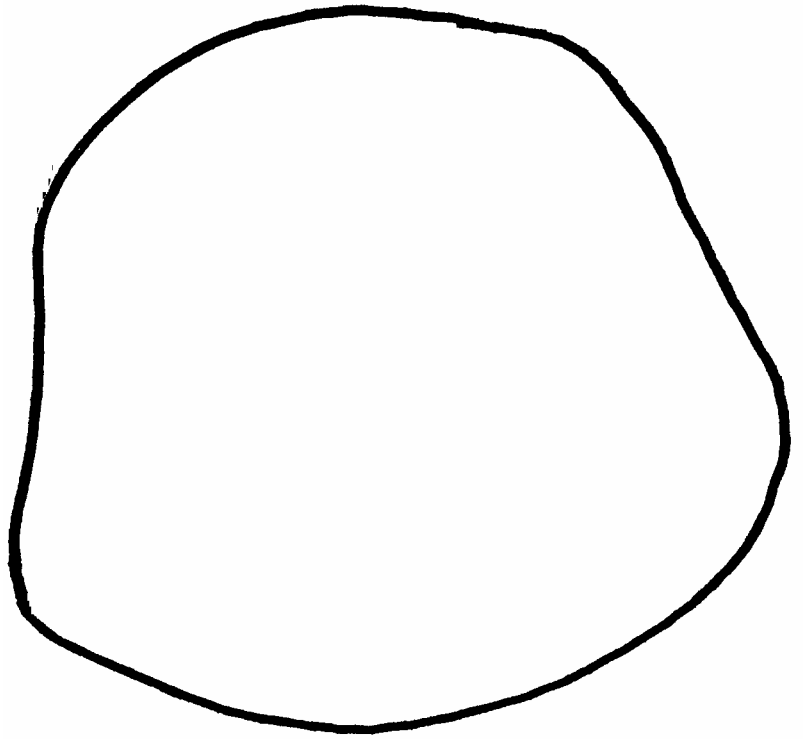
MOUSE BODY  
PLACE PATTERN ON  
FOLD OF THE  
FABRIC AT THE  
DOTTED LINE AND  
CUT ON THE SOLID  
LINES ONLY.  
CUT ONE FOR THE  
BODY FRONT AND  
ONE FOR THE BODY  
BACK

PIECES CUT FROM TWO  
GRAY SQUARES OF FELT

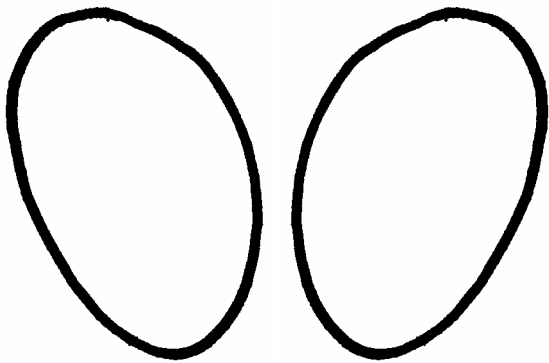




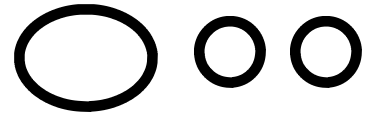
GRAY MOUSE  
OUTER EARS—  
ATTACH TO FRONT  
HEAD PIECE  
BEFORE  
ASSEMBLY



GRAY MOUSE HEAD FRONT AND BACK  
(ADD CRAFT WHISKERS TO AND ATTACH FACIAL  
FEATURES BEFORE ASSEMBLY)



PINK MOUSE INNER EARS—ATTACH TO OUTER EARS AND ATTACH EARS TO HEAD FRONT PIECE BEFORE ASSEMBLY



BLACK MOUSE NOSE AND EYES—ATTACH TO FRONT HEAD PIECE BEFORE ASSEMBLY



WHITE MOUSE TEETH—DRAW OR EMBROIDER MOUTH AND BETWEEN TEETH AND ATTACH TO FRONT HEAD PIECE BEFORE ASSEMBLY

