

# Make a Lenny Lion Puppet



# PATTERN FOR A LENNY LION PUPPET

The puppet is cut from 12" X 12" squares of colored felt. You will need the following:

- 3 squares of yellow felt
- A small amount of brown
- A small amount of white and green
- A small amount of pink
- Tan yarn for mane

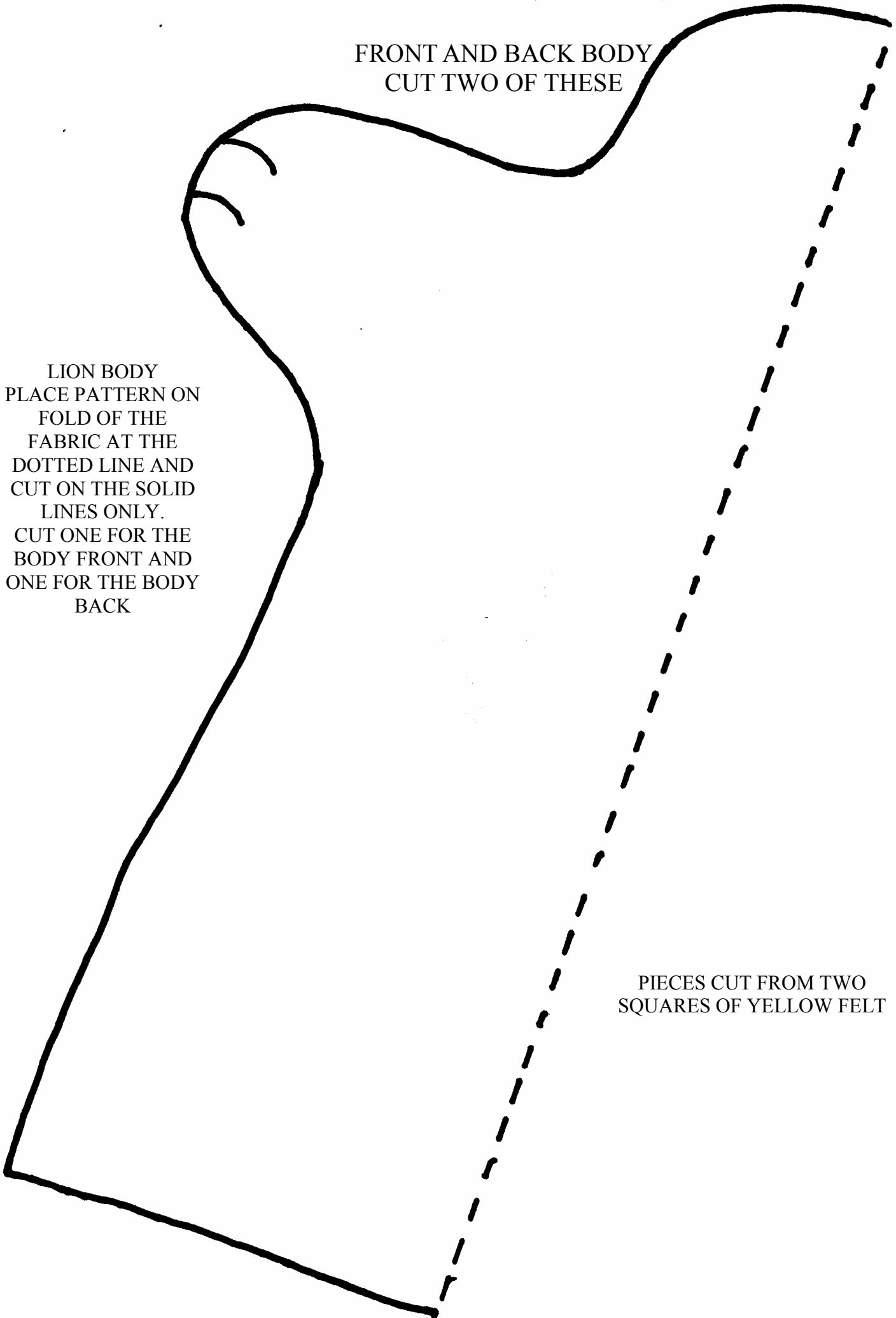
The puppet body pattern should be placed on a fold of the fabric at the dotted line. You will need two body parts—one for the front of the puppet and the other for the back of the puppet. **IMPORTANT: Do not glue or sew the front to the back until the other pieces are in place.** Cut out the other pieces. Sew or glue the pieces to the front head piece before putting the puppet together. Draw features on with a magic marker. (Alternative—embroider the features on.) This should be done prior to putting the puppet together. The puppet can then be sewn or glued together around the edges leaving the bottom open for your hand.

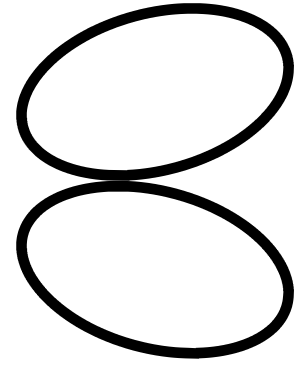
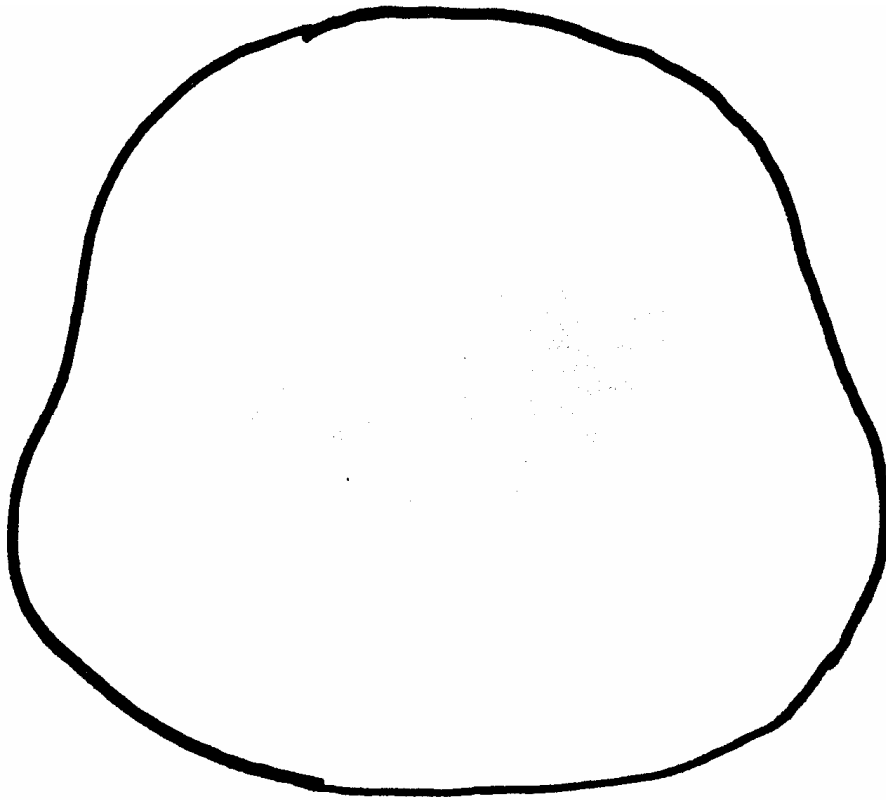


FRONT AND BACK BODY  
CUT TWO OF THESE

LION BODY  
PLACE PATTERN ON  
FOLD OF THE  
FABRIC AT THE  
DOTTED LINE AND  
CUT ON THE SOLID  
LINES ONLY.  
CUT ONE FOR THE  
BODY FRONT AND  
ONE FOR THE BODY  
BACK

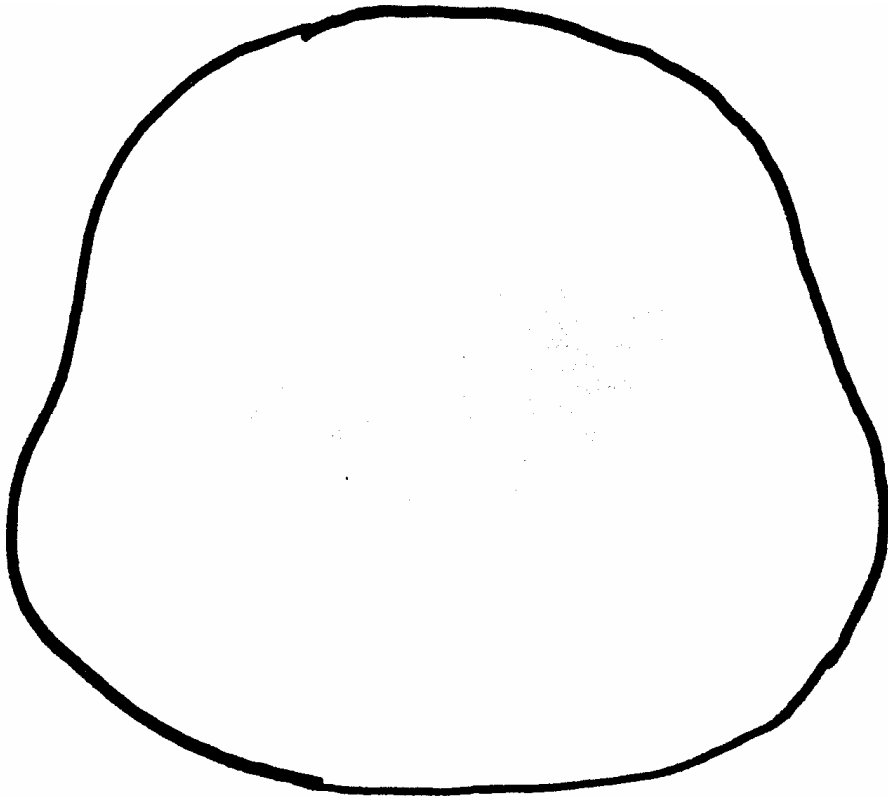
PIECES CUT FROM TWO  
SQUARES OF YELLOW FELT

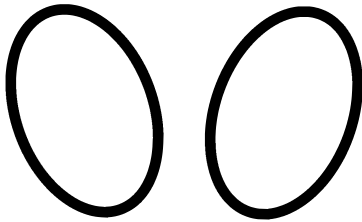




LION OUTER EARS

FRONT AND BACK OF LION HEAD (DRAW OR EMBROIDER MOUTH AND FRECKLES AND ATTACH FACIAL FEATURES. ARRANGE LOOPS OF TAN YARN AROUND FRONT HEAD PIECE BEFORE ASSEMBLY. SEE PUPPET ILLUSTRATION.

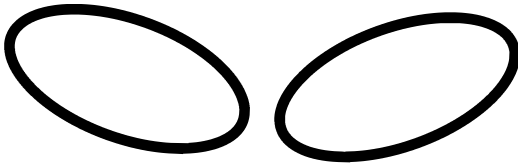




LION EYES—ATTACH  
GREEN PUPIL PIECES  
BEFORE ASSEMBLY



LION PUPILS—  
DRAW OR  
EMBROIDER  
TWINKLE BEFORE  
ASSEMBLY  
(SEE PUPPET  
ILLUSTRATION)



LION INNER EARS—ATTACH TO  
OUTER EARS AND ATTACH  
EARS TO HEAD FRONT PIECE  
BEFORE ASSEMBLY



LION NOSE AND  
EYEBROWS  
ATTACH BEFORE  
ASSEMBLY

