

# Make a Dinky Dog Puppet



# PATTERN FOR A DINKY DOG PUPPET

The puppet is cut from 12" X 12" squares of colored felt. You will need the following:

- 3 squares of brown felt
- A small amount of red
- A small amount of white
- A small amount of black

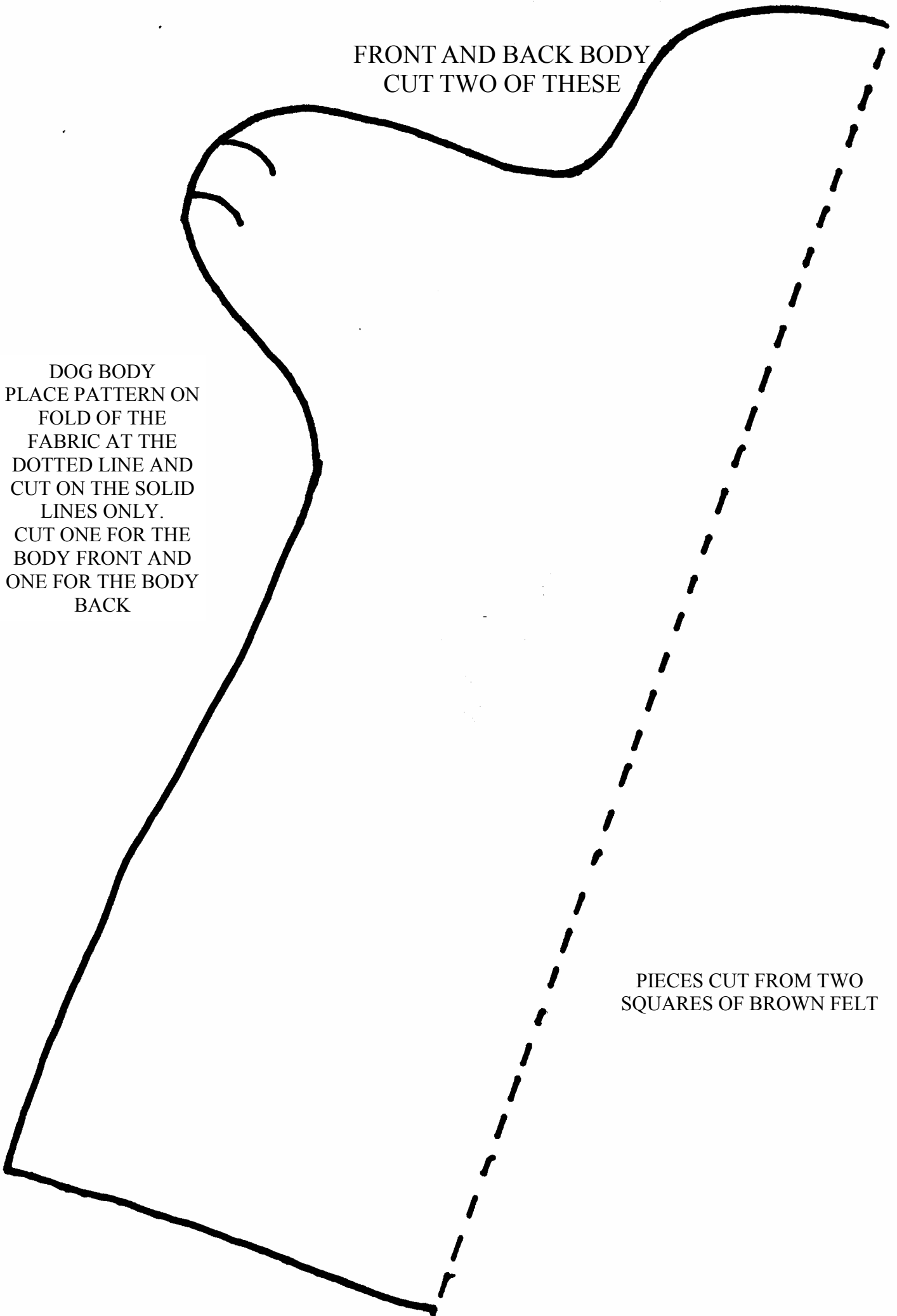
The puppet body pattern should be placed on a fold of the fabric at the dotted line. You will need two body parts—one for the front of the puppet and the other for the back of the puppet. **IMPORTANT: Do not glue or sew the front to the back until the other pieces are in place.** Cut out the other pieces. Sew or glue the pieces to the front head piece before putting the puppet together. Draw features on with a magic marker. (Alternative—embroider the features on.) This should be done prior to putting the puppet together. The puppet can then be sewn or glued together around the edges leaving the bottom open for your hand.

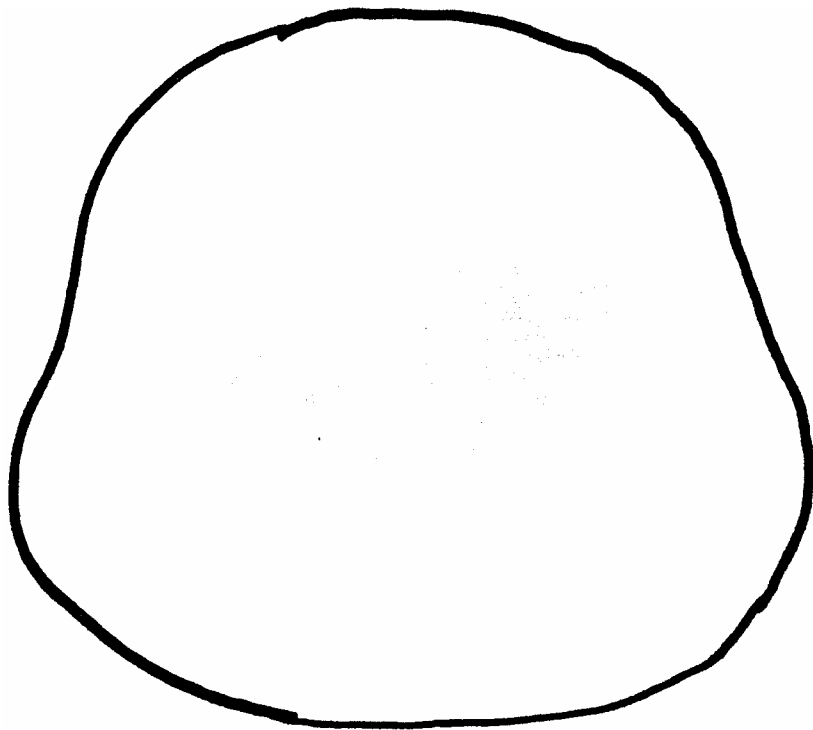


FRONT AND BACK BODY  
CUT TWO OF THESE

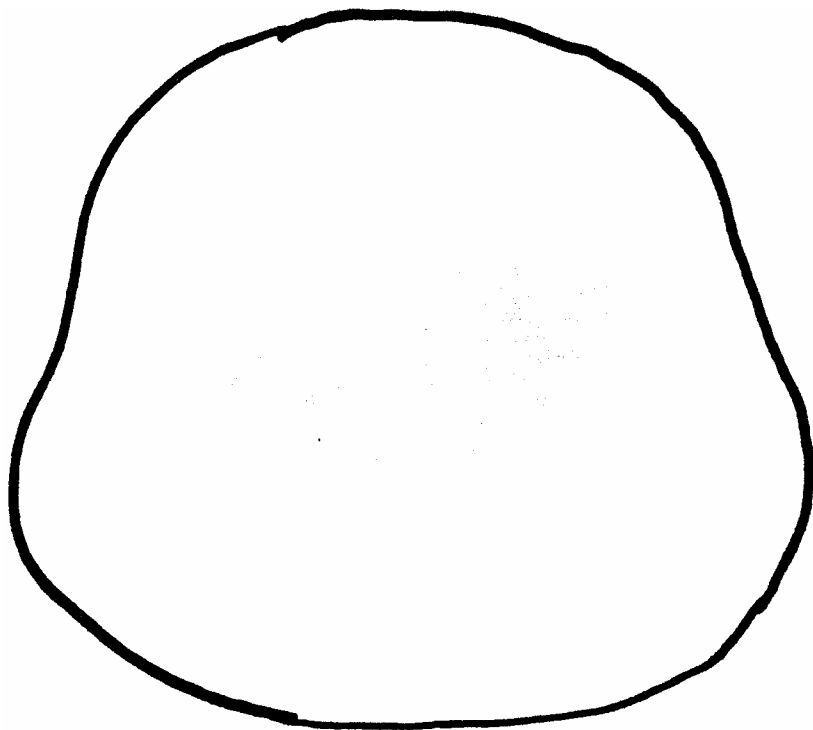
DOG BODY  
PLACE PATTERN ON  
FOLD OF THE  
FABRIC AT THE  
DOTTED LINE AND  
CUT ON THE SOLID  
LINES ONLY.  
CUT ONE FOR THE  
BODY FRONT AND  
ONE FOR THE BODY  
BACK

PIECES CUT FROM TWO  
SQUARES OF BROWN FELT

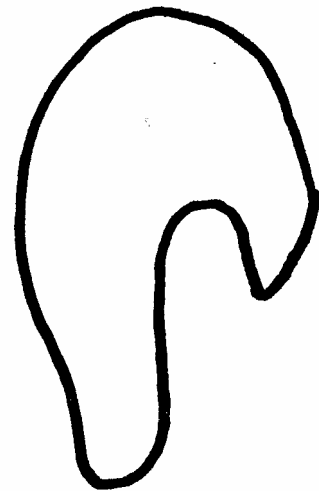
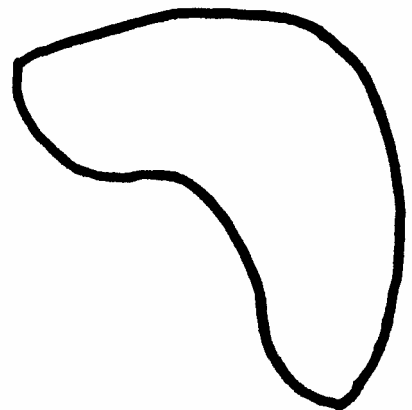




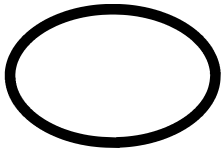
DOG HEAD FRONT AND BACK  
EMBROIDER EYEBROWS, MOUTH AND FRECKLES



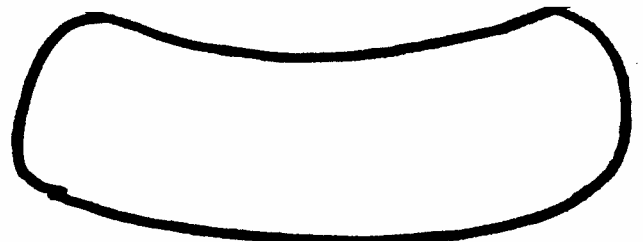
DOG'S DROOPY EYELIDS  
SEW TO EYES AND THEN ON  
FRONT HEAD PIECE



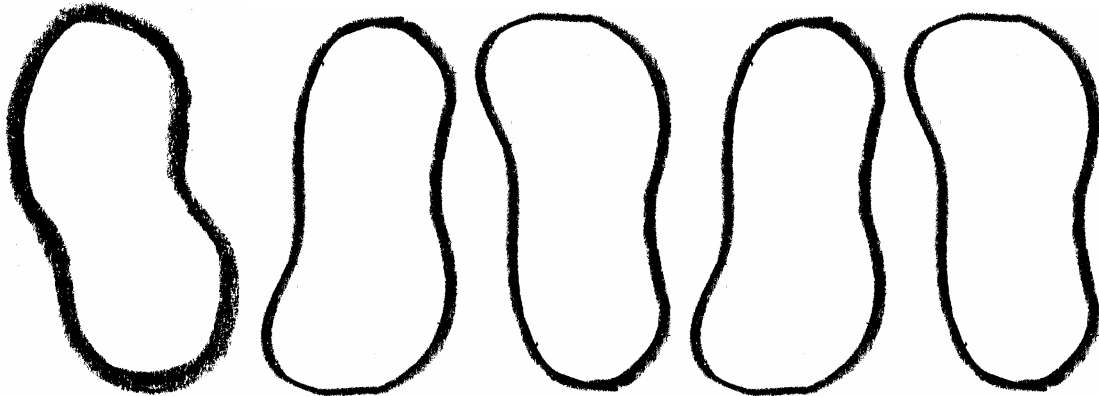
DOG EARS—ATTACH  
TO FRONT HEAD PIECE  
BEFORE ASSEMBLY



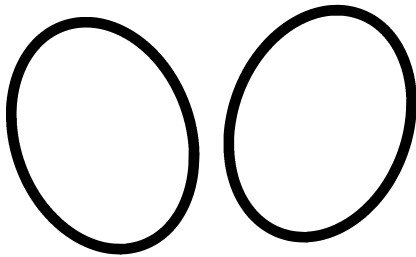
DOG NOSE—  
ATTACH TO FACE  
BEFORE ASSEMBLY



DOG COLLAR



DOG SPOTS—ATTACH TO BODY PIECES BEFORE ASSEMBLY—THREE  
SPOTS TO FRONT BODY PIECE AND TWO SPOTS TO BACK BODY PIECE



DOG EYES  
(ATTACH SMALL POMPOM  
FOR PUPILS AND ATTACH  
DROOPY EYELIDS.)

